

Installation of the Database to Save Enterprise Architect Model

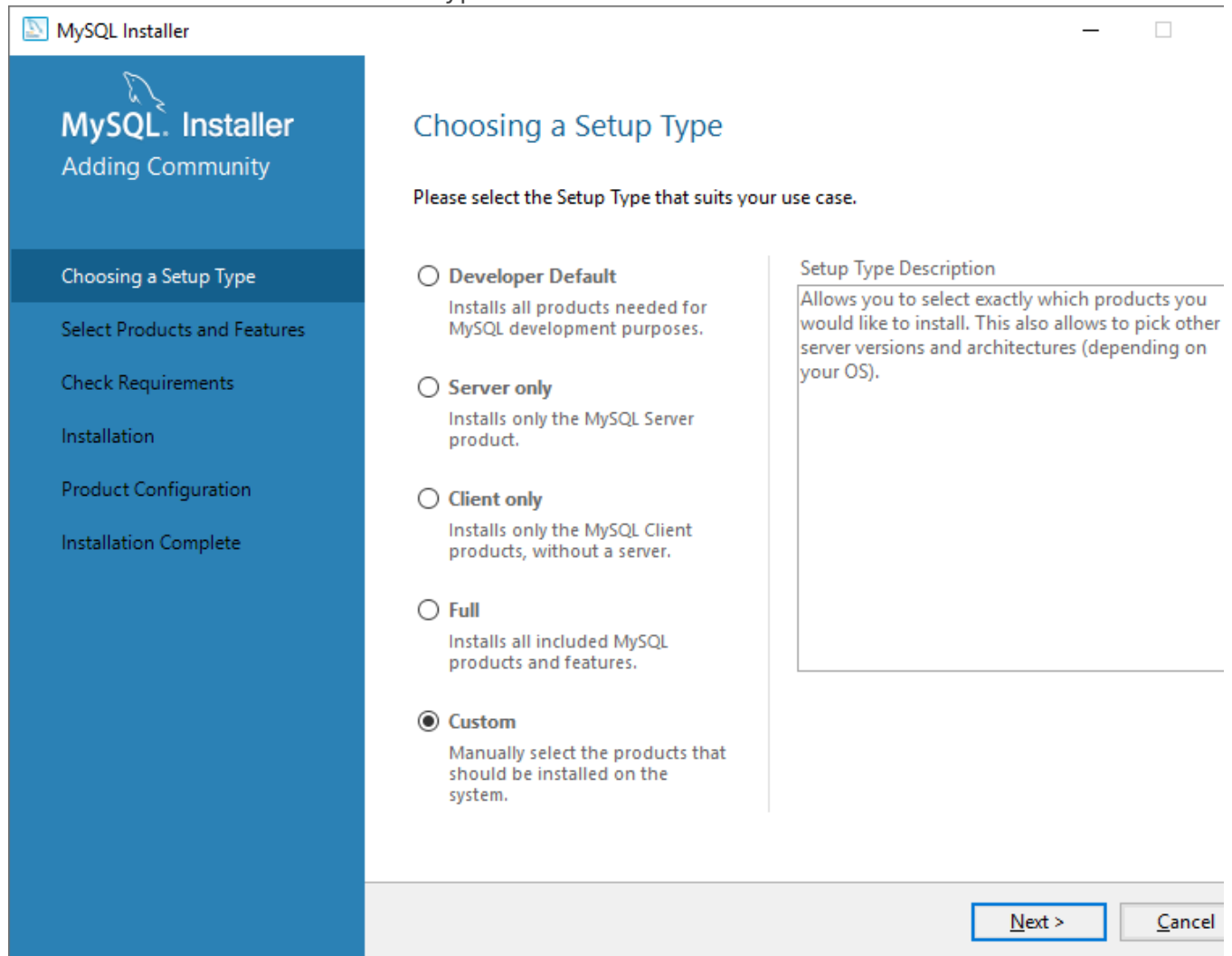
If a database engine is installed on the computer or available on the network, it is possible to skip this chapter.

Here you can learn how to install one of the supported database engines.

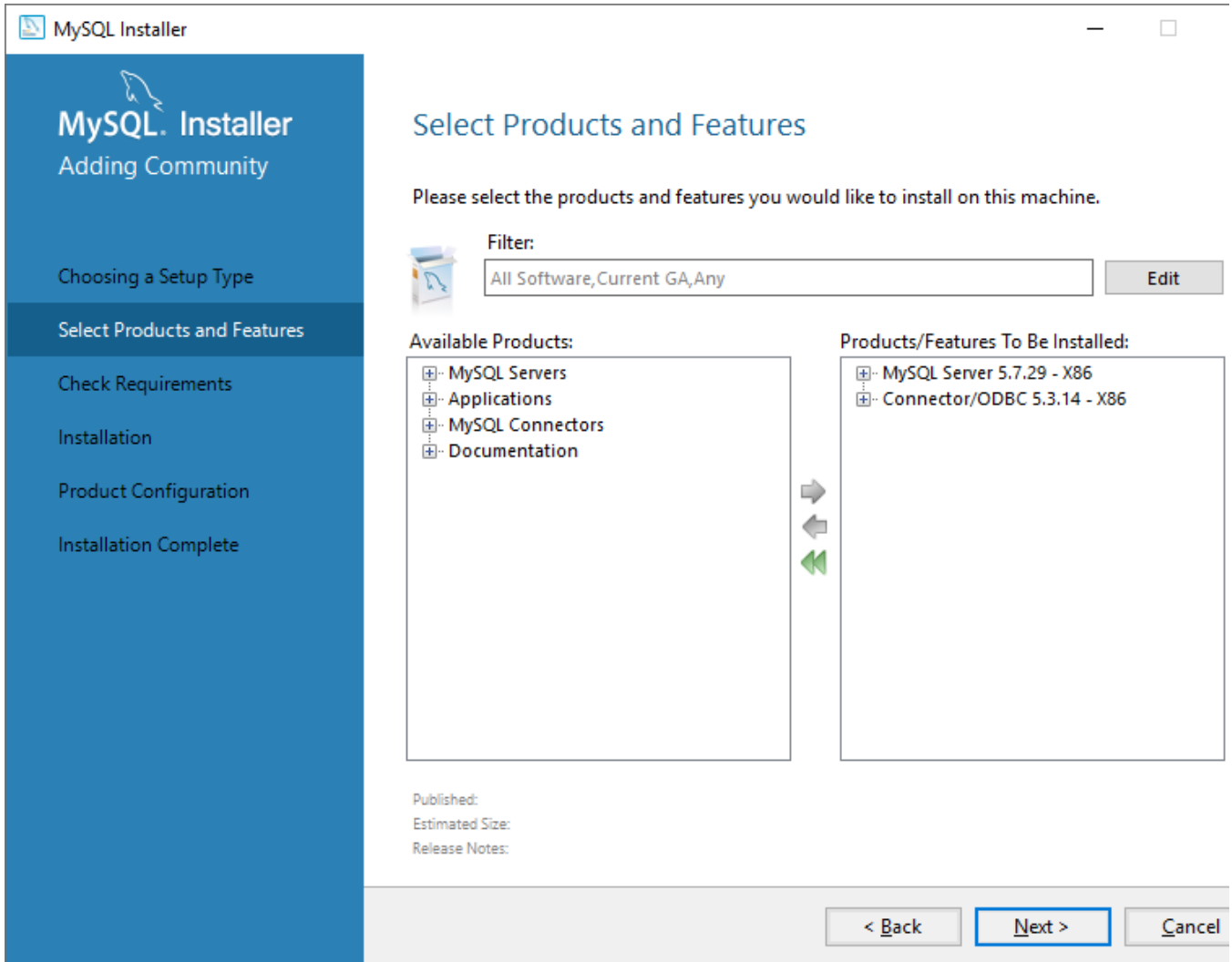
The one we're using is **MySQL**, which is recommended as ideal for the needs of both the Enterprise Architect program and EaInfoport

1. Before installing MySQL, it is necessary to ensure that the **vcredist_x86.exe** helper package in version 2013 is installed on the computer. Search the internet for "Visual C++ Redistributable Packages for Visual Studio 2013", save the vcredist_x86.exe variant to the disk and run it.
After approval of the licence, the package will be installed. There is no need to restart the computer. Delete the vcredist_x86.exe file
2. Download the 32-bit web installer for the 5.7.x series from
<https://downloads.mysql.com/archives/installer/>. So currently *mysql-installer-web-community-5.7.28.0.msi*
Save the file to the local disk (for example, to the C:\EAInfoport folder)
3. Run the file

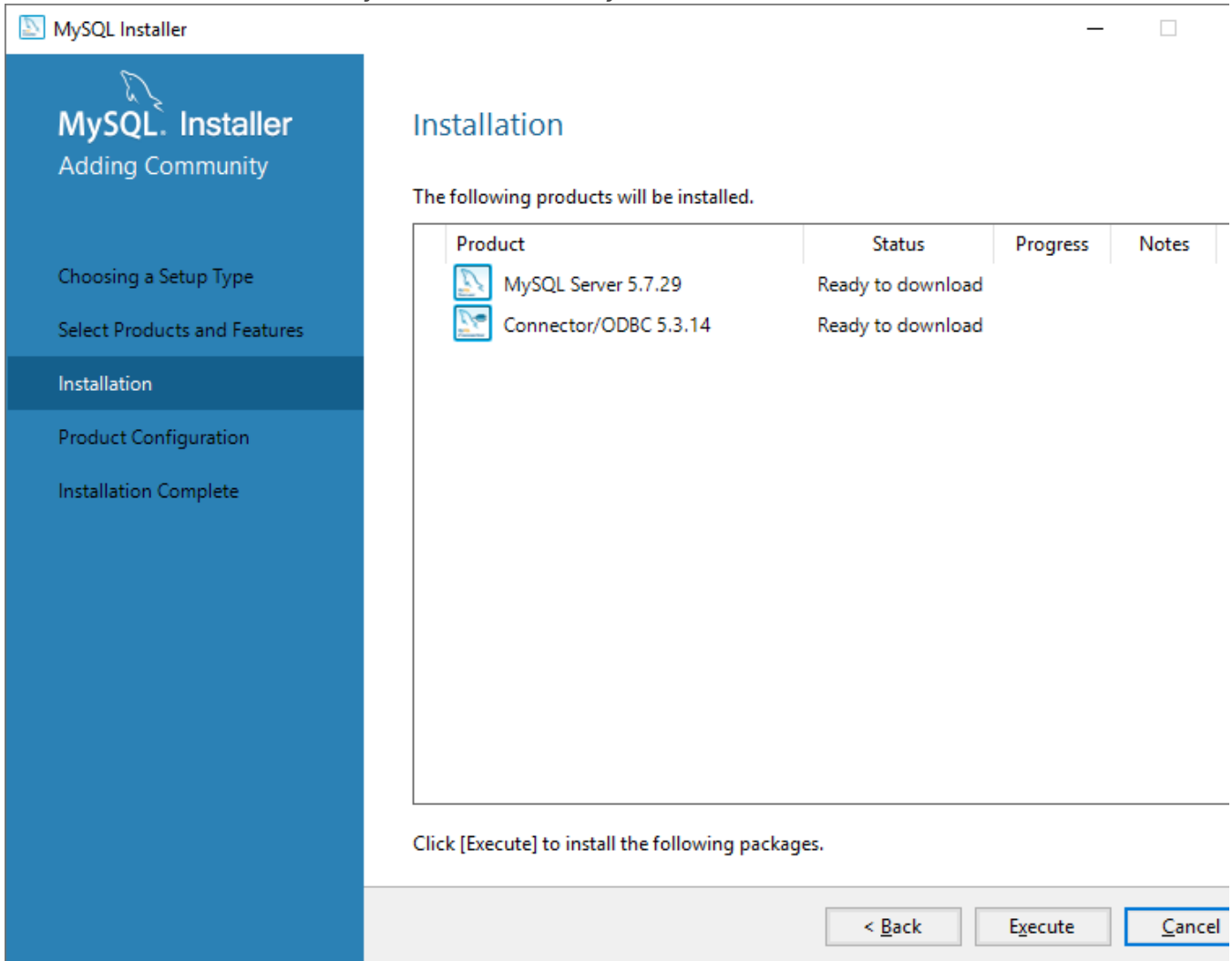
4. Select *Custom* as the installation type



5. Select two items to install:
MySQL Server 5.7.x - X86
Connector/ODBC 5.3.x - X86



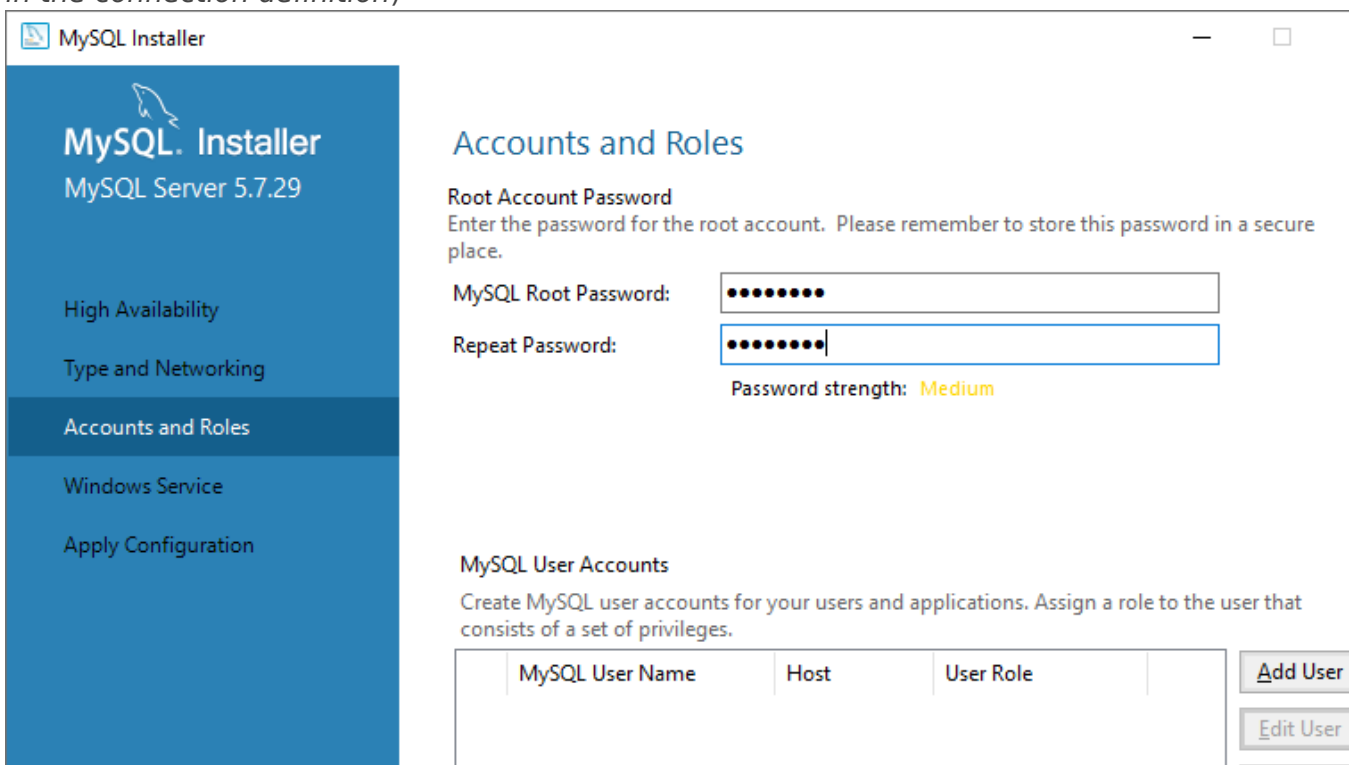
6. On the next tab, start the MySQL installation *MySQL*

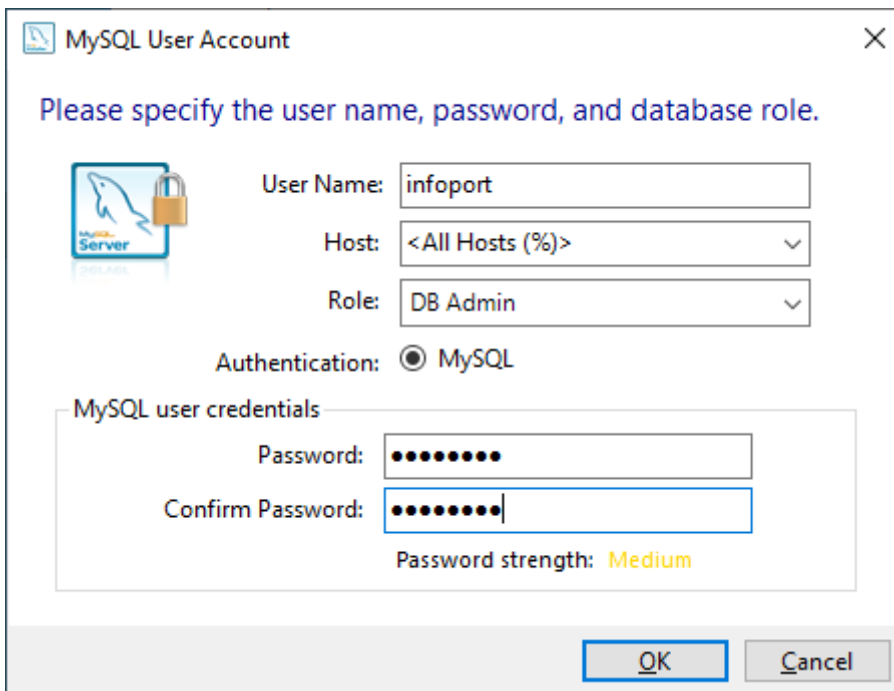


7. Leave the settings on the other tabs as default.

Only on the tab with the settings of accounts and roles, first fill in the root password (*for the database administrator*) and then create a user infoport, under which you will log into the database later.

All passwords (*mainly the administrator ones*) should be secure. For demonstration purposes, we use the phrase P@ssw0rd as a password in the manual. (*It will be seen later in the connection definition*)





The image shows a 'MySQL User Account' dialog box. It has a title bar with a MySQL logo and a close button. The main text says 'Please specify the user name, password, and database role.' Below this, there's a 'MySQL Server' icon with a padlock. To the right of the icon are three fields: 'User Name' with the text 'infoport', 'Host' with a dropdown menu showing '<All Hosts (%)>', and 'Role' with a dropdown menu showing 'DB Admin'. Below these is an 'Authentication' section with a radio button selected for 'MySQL'. Underneath is a 'MySQL user credentials' section containing 'Password' and 'Confirm Password' fields, both filled with dots. Below these fields, it says 'Password strength: Medium'. At the bottom right are 'OK' and 'Cancel' buttons.

MySQL User Account

Please specify the user name, password, and database role.

User Name: infoport

Host: <All Hosts (%)>

Role: DB Admin

Authentication: ☒ MySQL

MySQL user credentials

Password:

Confirm Password:

Password strength: Medium

OK Cancel

8. Delete the *mysql-installer-web-community-5.7.28.0.msi* installation file from the disk.
This completes the installation of the database and the ODBC driver (*but it will still need to be configured – see below*)

Revision #4

Created 7 April 2022 10:25:52

Updated 8 February 2024 09:36:21 by Karolína Kavanová