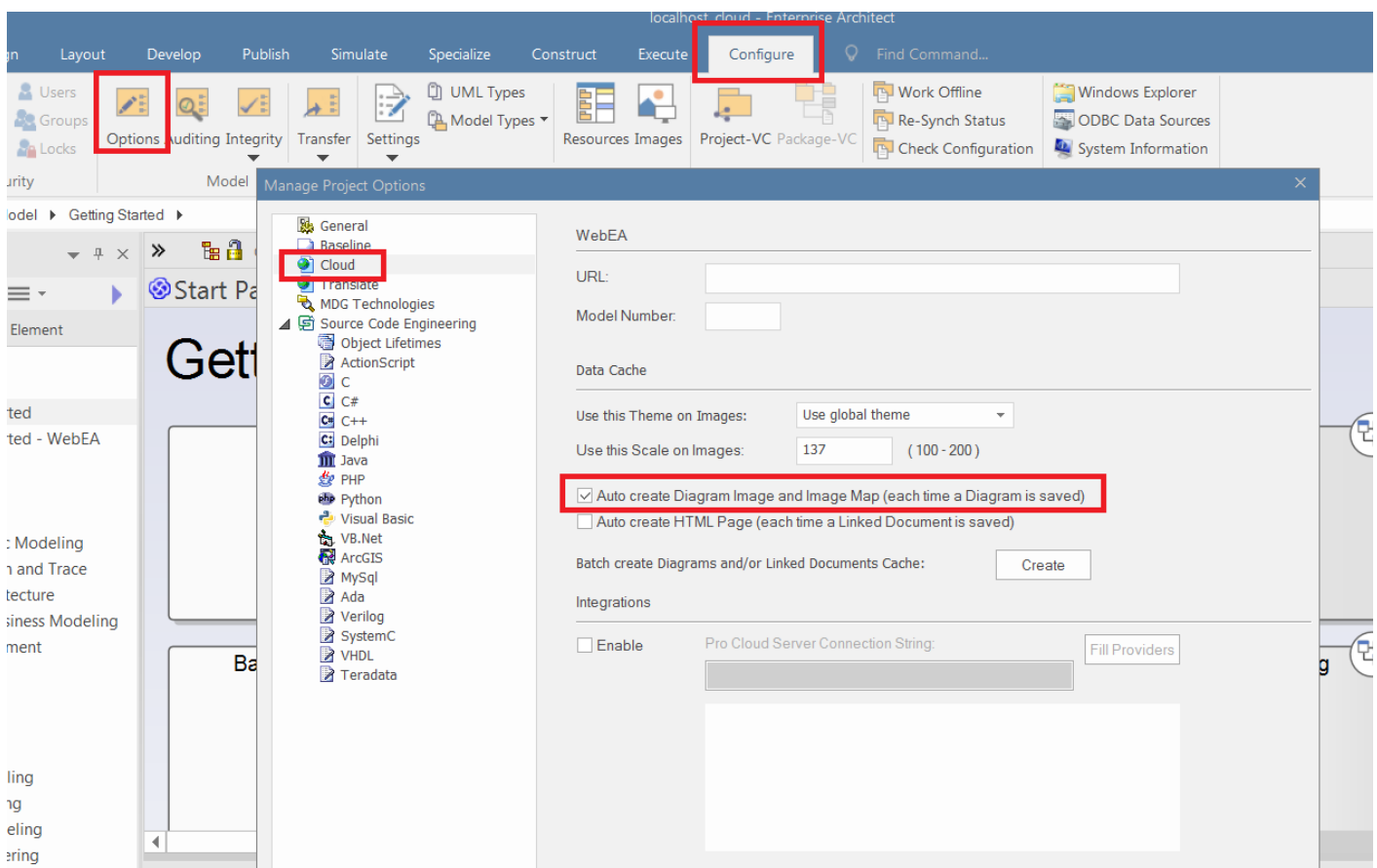


# Setting an Element Size in a Diagram

- **Settings required for each project!**

If you want to use Infoport to edit a diagram, open **Enterprise Architect**, click on the **Configure** tab, then go to the **Options** tab. In the window that will open, click on **Cloud** and check the option **Auto create Diagram Image and Image Map (each time a Diagram is saved)**.



Revision #2

Created 7 April 2022 10:45:51

Updated 8 February 2024 09:37:20 by Karolína Kavanová