

Diagram search

If the user selects diagram search, the title and note of all diagrams are searched.

[Simple](#) [Advanced search](#) [EA Path search](#) [GUID search](#) [Diagram search](#)

Searches the "Name" and "Notes" fields for all diagrams

Phrase

ShoppingBasket

SEARCH

In the "*Phrase*" field, the user types the diagram to be searched and clicks the "*Search*" button.

[Simple](#) [Advanced search](#) [EA Path search](#) [GUID search](#) [Diagram search](#)

Searches the "Name" and "Notes" fields for all diagrams

Phrase

ShoppingBasket

SEARCH

A table is displayed where the user can see "*Artifact type, name, type, stereotype, modified and package*".

Search type: Diagram search
Phrase: ShoppingBasket

Artifact type	Name	Type	Stereotype	Modified	Package
NO FILTER	NO FILTER	NO FILTER	NO FILTER	NO FILTER	NO FILTER
Diagram	ShoppingBasket	Logical		09:42:43 2012-12-06	ShoppingBasket
Diagram	ShoppingBasket	Logical		09:46:36 2012-12-06	ShoppingBasket

Showing 1 to 2 of 2 entries

← BACK

Show 10 entries
Setup of columns

The user can fill in part or all of the name in the highlighted section to find a specific artifact more quickly.

After filling in, just use "*Enter*" or use the "*magnifying glass*" under the field and the table will be updated and filtered according to the filled in text.

Search type: Diagram search
Phrase: ShoppingBasket

Artefact type	Name	Type	Stereotype	Modified	Package
Diagram	ShoppingBasket	Logical		09:42:43 2012-12-06	ShoppingBasket
Diagram	ShoppingBasket	Logical		09:46:36 2012-12-06	ShoppingBasket

Showing 1 to 2 of 2 entries

← BACK

Show 10 entries
Setup of columns: [icon]

Each column has arrows in the header next to the name to allow sorting (No. 1)

The arrow next to the "magnifying glass" expands a mini dialog where the user can select the type of filtering condition (No. 2)

Artefact type	Name	Type	Stereotype	Modified	Package
Element	Stock Control Manager	Class	Contains	13:36:58 2016-11-02	Stakeholders
Element	Shopping Cart	Class	Not contains	13:38:53 2016-11-02	Information Catalog
Element	Address	Class	Equals	13:38:59 2016-11-02	Information Catalog
Element	Stock Item	Class	Not equals	16:44:36 2015-05-09	Domain Model
Element	Line Item	Class	Starts with	16:44:36 2015-05-09	Domain Model
Element	Transaction	Class	Ends with	15:20:50 2015-04-28	Domain Model
Element	Finance Manager	Class	No filter	15:17:57 2016-03-01	Stakeholders
Element	Stock Control Manager	Class	internal worker	15:28:35 2017-03-03	Stakeholders
Element	Shopping Cart	Class	internal worker	07:17:42 2017-03-18	Element Discussions
Element	Order	Class		07:15:51 2017-03-18	Element Discussions

Showing 1 to 10 of 14 entries (Total 51 entries) [Cancel filter](#)

1 2

← BACK

Show 10 entries
Setup of columns: [icon]

If the user wants to refresh the filtering table, just click on the blue text "Cancel filter" (No. 3)

In the footer of the table the user can see:

- Number of artifacts displayed
- Number of pages of displayed artefacts - active area where it is possible to click on the page number to get further in the displayed list
- Setting the columns displayed in the table

Search type: Diagram search
Phrase: ShoppingBasket

Artefact type	Name	Type	Stereotype	Modified	Package
Diagram	ShoppingBasket	Logical		09:42:43 2012-12-06	ShoppingBasket
Diagram	ShoppingBasket	Logical		09:46:36 2012-12-06	ShoppingBasket

Showing 1 to 2 of 2 entries

← BACK

Show 10 entries
Setup of columns: [icon]

"Displayed records" - you can see how many records are searched and how many are displayed.

"Display settings" - you can set how many records are displayed per page (the number of records

can be changed with the arrow). According to the displayed records the number of pages changes.

Search type: Diagram search
Phrase: ShoppingBasket

Artefact type	Name	Type	Stereotype	Modified	Package
Diagram	ShoppingBasket	Logical		09:42:43 2012-12-06	ShoppingBasket
Diagram	ShoppingBasket	Logical		09:46:36 2012-12-06	ShoppingBasket

Showing 1 to 2 of 2 entries

← BACK

Show 10 entries
Set 10 items

"Columns settings" - if the user clicks on columns, a dialog box pops up where he can click on columns he does not want or need to see in the table, the change will take effect immediately after clicking on a certain row.

The "Close" button closes the dialog box.

Repository Example

Search type: Diagram search
Phrase: ShoppingBasket

Columns

- Artefact type
- Name
- Type
- Stereotype
- Modified
- Package

← BACK

CLOSE

Show 10 entries
Setup of columns

To view a specific artifact, the user can click on that row.

Search type: Diagram search
Phrase: ShoppingBasket

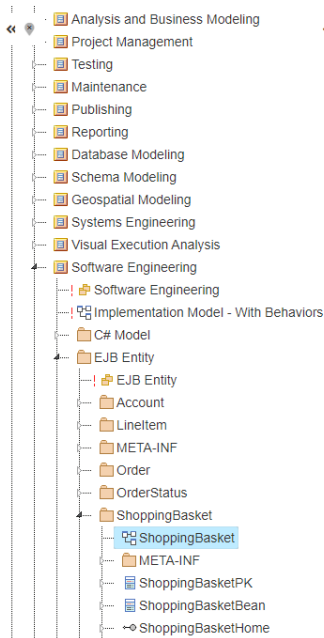
Artefact type	Name	Type	Stereotype	Modified	Package
Diagram	ShoppingBasket	Logical		09:42:43 2012-12-06	ShoppingBasket
Diagram	ShoppingBasket	Logical		09:46:36 2012-12-06	ShoppingBasket

Showing 1 to 2 of 2 entries

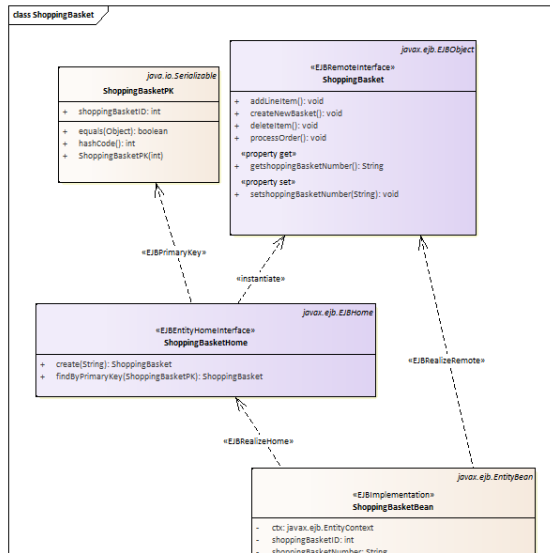
← BACK

Show 10 entries
Setup of columns

The click redirects the user to the element. The right part shows the artifact detail and the left part shows the artifact marked in the tree.



ShoppingBasket



Revision #2

Created 23 May 2022 08:09:01

Updated 31 August 2022 08:56:51