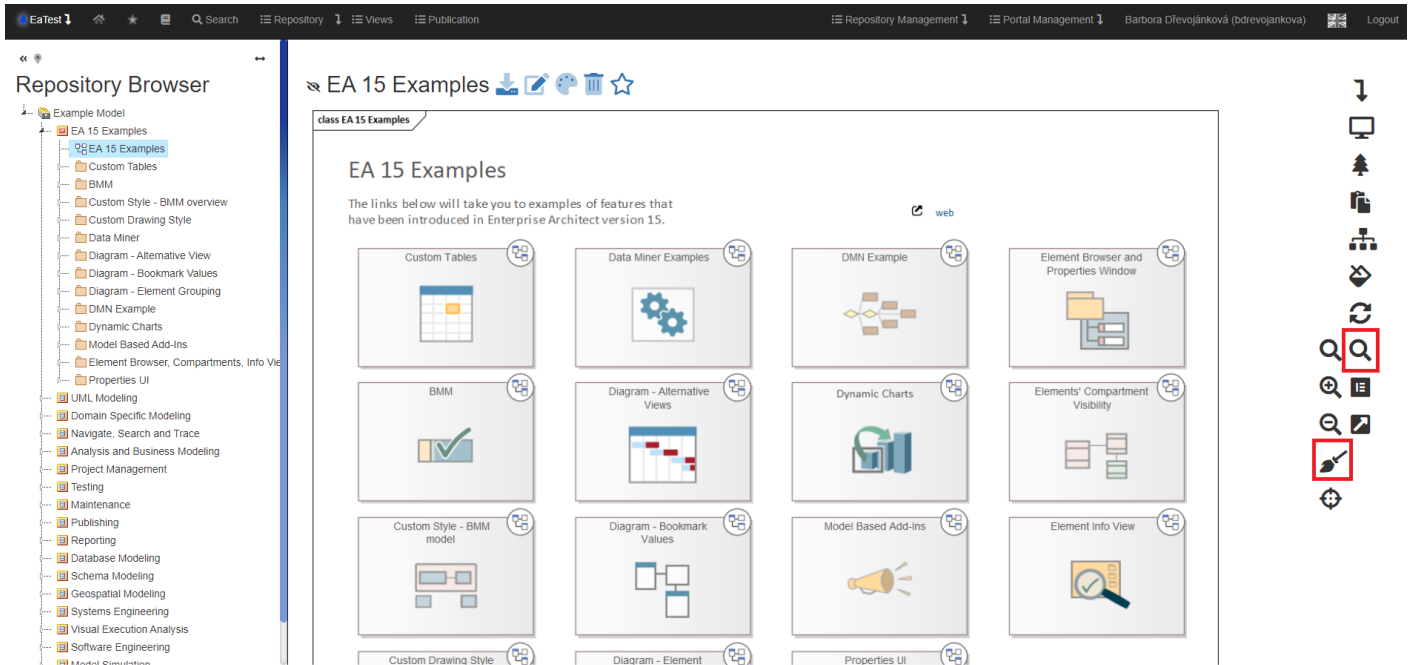
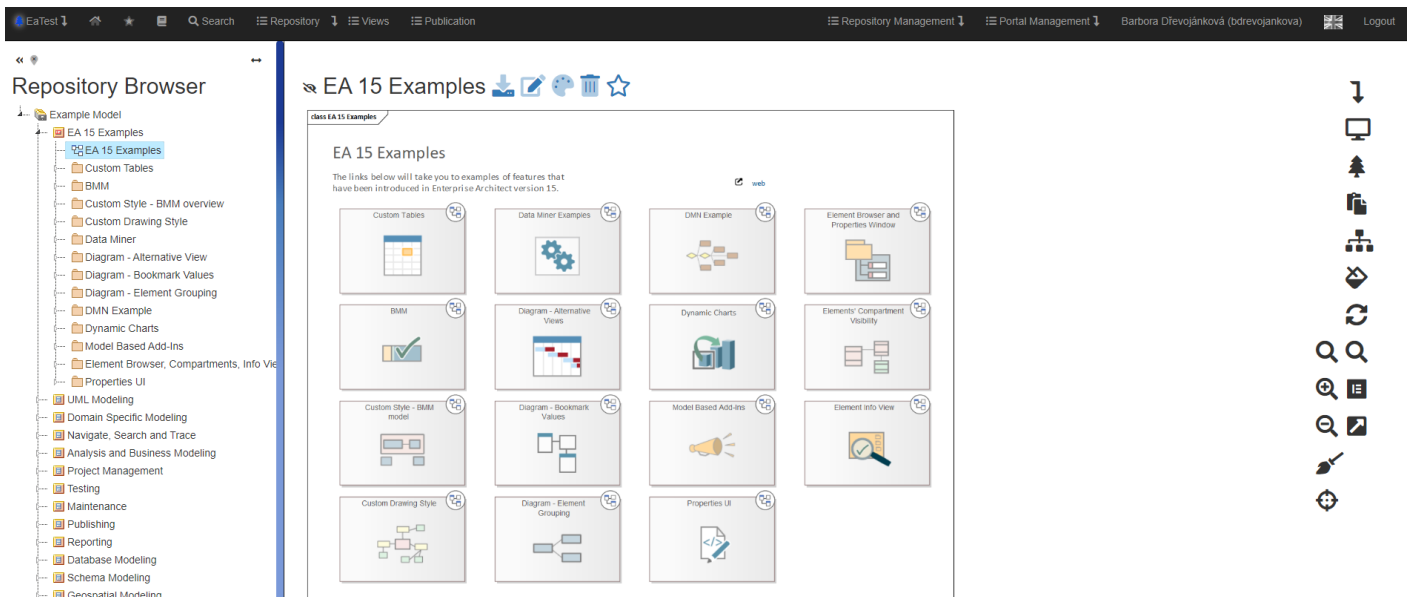


Reset Diagram Zoom

The functionality is available in the context menu under the symbol



If you want to return to the default zoom (100%), click on the “Reset Diagram Zoom” icon.



The diagram will zoom out to the original 100%.

Revision #2

Created 31 May 2022 11:48:43

Updated 9 January 2024 12:35:27 by Karolína Kavanová