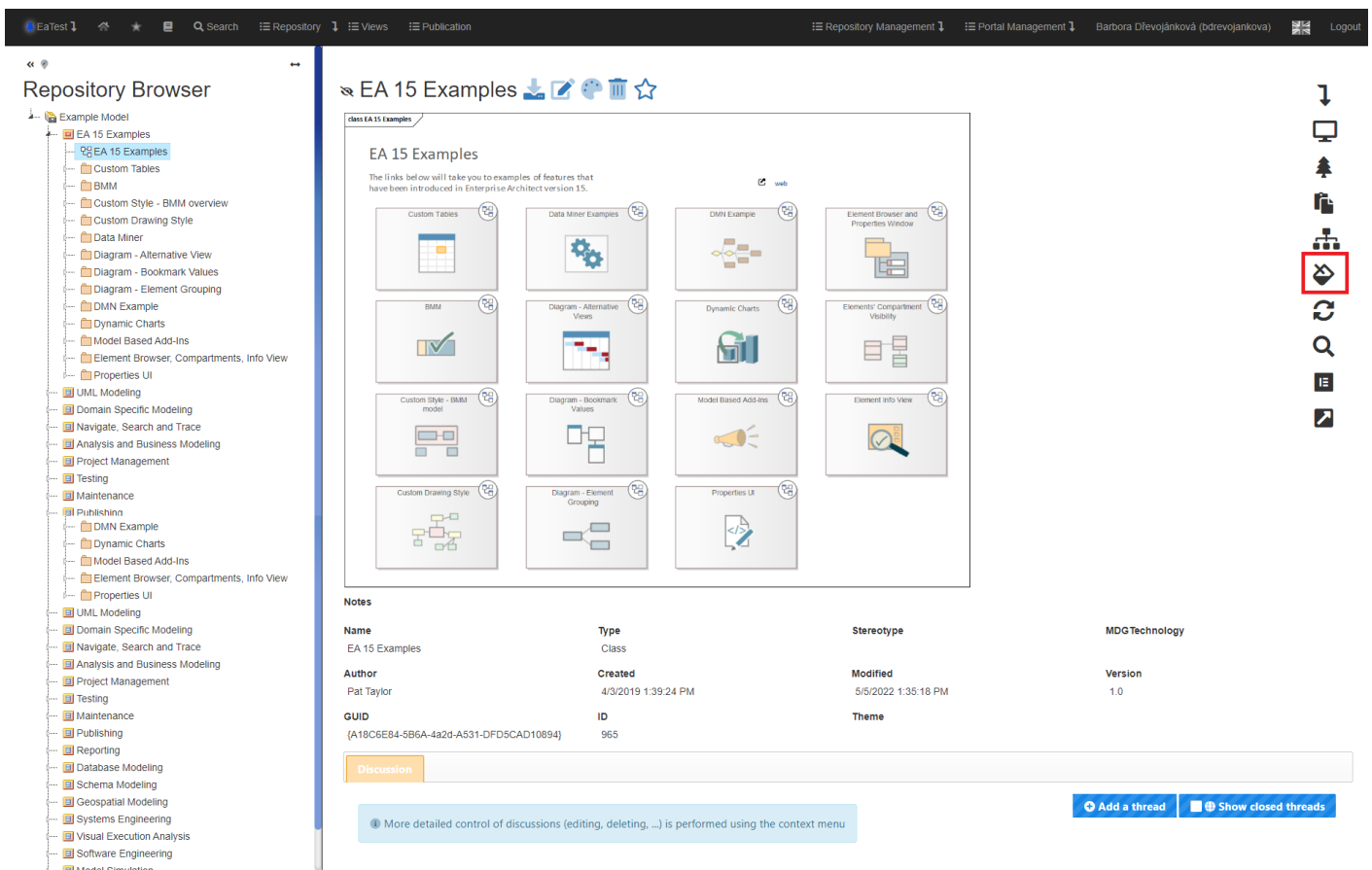


URL for Direct Access

A user can copy a URL for direct access and send it to a colleague.

The colleague will be able to view this URL even if he **is not logged in**, but he will only see the relevant artefact – for example, he cannot go anywhere else in the repository or to a publication, etc.

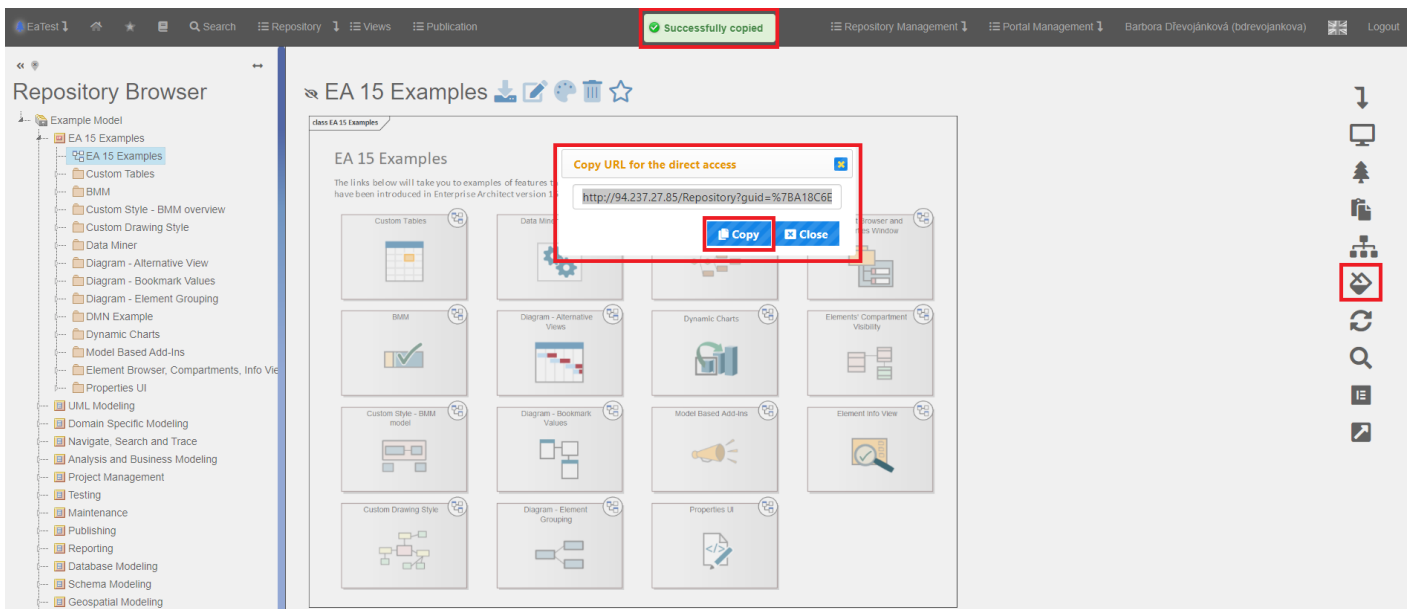
The functionality is available in the context menu under the symbol 



The screenshot displays the Enterprise Architect (EaTest) interface. On the left is the 'Repository Browser' showing a tree structure of models. The main area displays the 'EA 15 Examples' class, which contains a grid of 12 example artefacts. A context menu is open over the 'EA 15 Examples' class, showing various actions. The 'URL for Direct Access' icon, which is a document with a magnifying glass, is highlighted with a red box. Below the grid, there is a 'Notes' section with a table of metadata.

Name	Type	Stereotype	MDG Technology
EA 15 Examples	Class		
Author	Created	Modified	Version
Pat Taylor	4/3/2019 1:39:24 PM	5/5/2022 1:35:18 PM	1.0
GUID	ID	Theme	
{A19C6E84-5B6A-4a2d-A531-DFD5CAD10894}	965		

After clicking on the “URL for Direct Access” icon, a pop-up chart will appear where the user can get the direct URL of the relevant artefact.

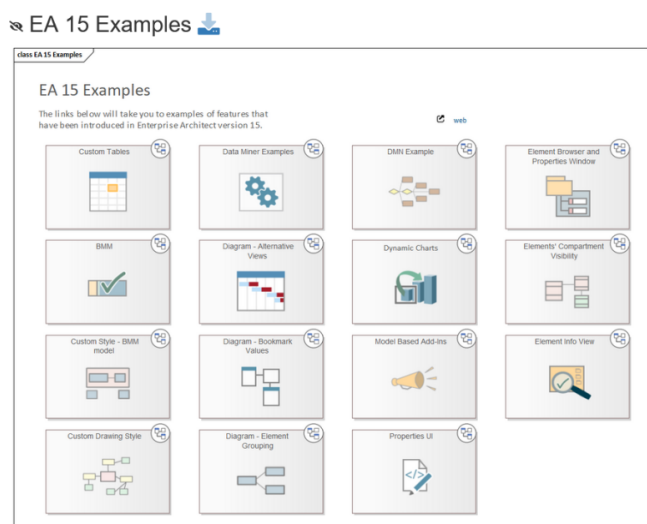
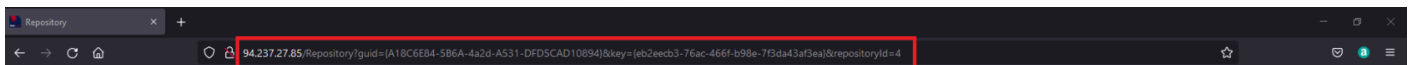


After clicking on the “Copy” button, the user saves the URL to the clipboard.

An identical method is to select the entire line with CTRL+A and copy it to the clipboard with CTRL+C.

Then just paste the URL in the appropriate place.

The recipient of the URL for direct access after entering it in the browser will get the same detail as the user who created the URL.



The user has no permissions. He/she can only view a diagram.

Revision #4

Created 31 May 2022 11:17:03

Updated 9 January 2024 12:33:31 by Karolína Kavanová