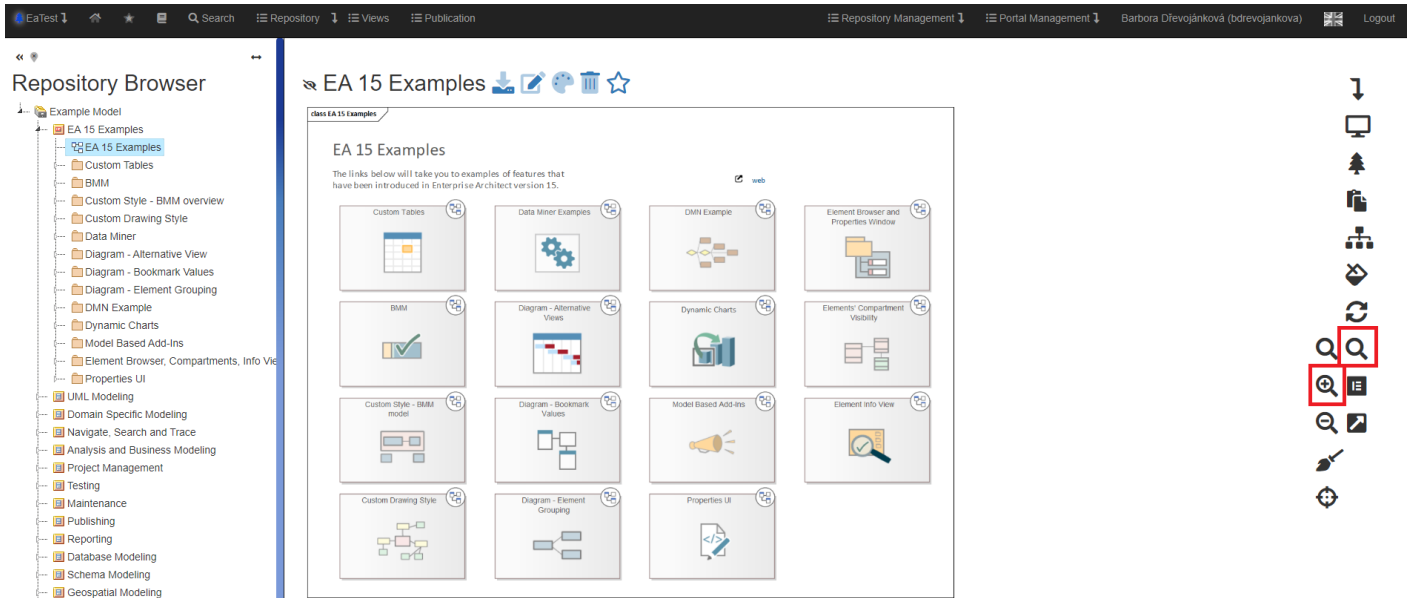


Zoom in

The functionality is available in the context menu under the symbol



We have 2 options to zoom in the diagram:

- Hold down the CTRL key + scroll the mouse wheel.
- Click on the “Zoom in” icon.

Revision #2

Created 31 May 2022 11:43:19

Updated 9 January 2024 12:35:05 by Karolína Kavanová