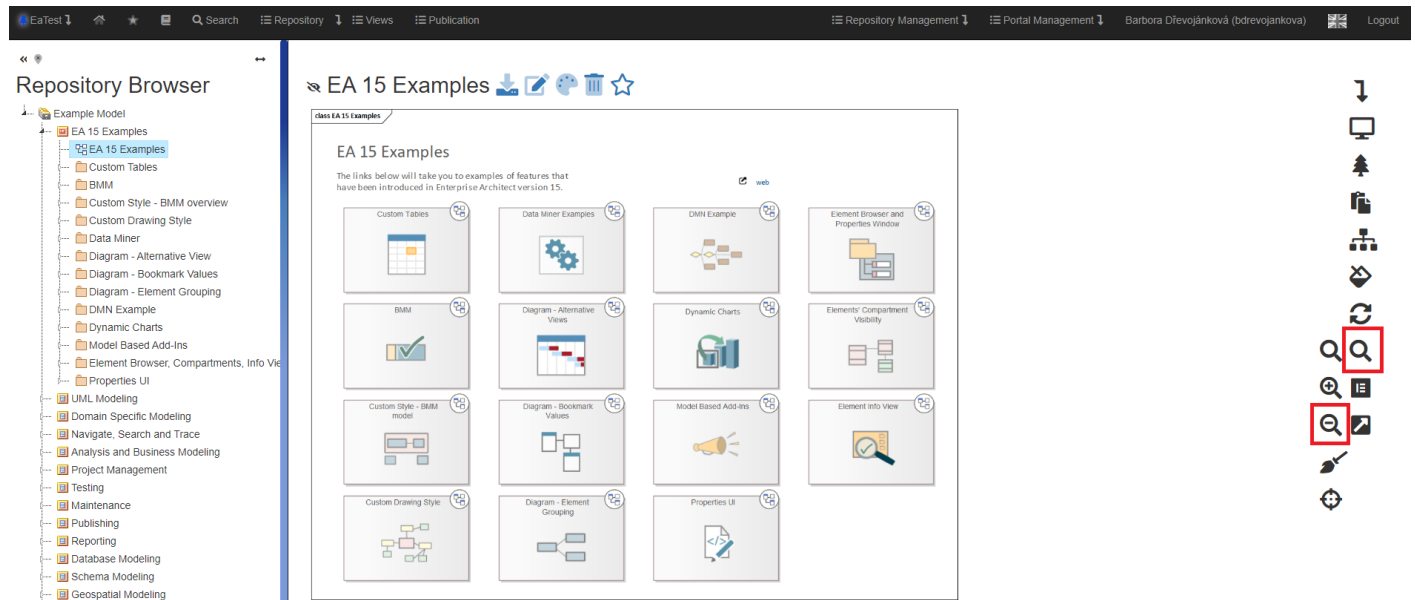


# Zoom out

The functionality is available in the context menu under the symbol



We have 2 options to zoom out the diagram:

- Hold down the CTRL key + scroll the mouse wheel
- Click on the “Zoom out” icon

Revision #2

Created 31 May 2022 11:46:45

Updated 9 January 2024 12:35:15 by Karolína Kavanová